

Jessee, Chase

Results

K	BB	HBP	H	2B	3B	HR	1st Pitch K %
2	1	—	2	—	—	—	71.4%

Summary Table

Pitch Type	Count	%	Edge %	Takes	Called Strikes	Swings	Whiffs	CSW %	Fouls	BIP
Fastball	22	71.0%	36.4%	10	4	12	3	31.8%	6	3
Sinker	1	3.2%	100%	—	—	1	—	0%	1	0
Curveball	1	3.2%	0%	1	—	—	—	0%	—	0
Cutter	4	12.9%	25%	2	1	2	—	25%	2	0
Changeup	3	9.7%	0%	1	—	2	—	0%	1	1
Total	31	100%	32.3%	14	5	17	3	25.8%	10	4

Plate Discipline

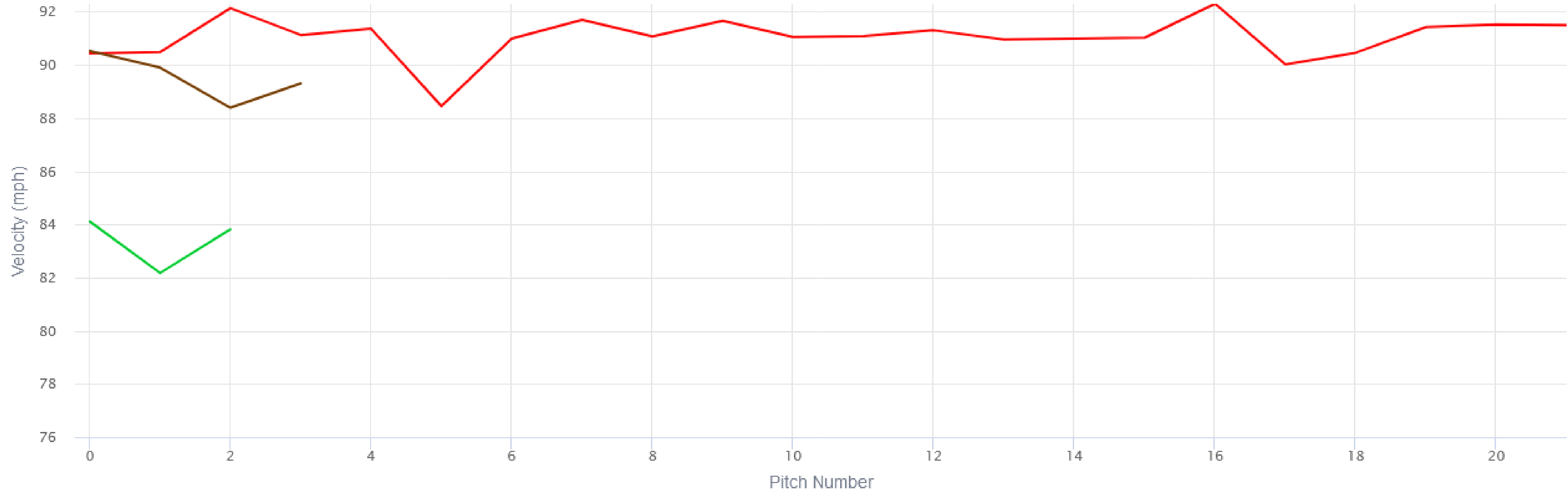
Pitch type	#	Swing %	SwStr %	Whiff %	Zone Swing %	Zone Contact %	Chase %	Chase Contact %	Edge %	Strike %
Fastball	22	54.5%	13.6%	25%	78.6%	72.7%	12.5%	100%	36.4%	72.7%
Sinker	1	100%	0%	0%	0%	0%	100%	100%	100%	100%
Curveball	1	0%	0%	0%	0%	0%	0%	0%	0%	0%
Cutter	4	50%	0%	0%	66.7%	100%	0%	0%	25%	75%
Changeup	3	66.7%	0%	0%	100%	100%	50%	100%	0%	66.7%
Total	31	54.8%	9.7%	17.6%	77.8%	78.6%	23.1%	100%	32.3%	71.0%

Pitch Characteristics

Pitch type	Avg Velo	Peak Velo	Avg Spin	Peak Spin	Tilt	Axis	Efficiency	V Break	Ind V Break	H Break	V Approach	Avg Rel Height	Avg Extension
Fastball	91.0	92.3	2094	2258	11:16	158	0%	-23.2	10.6	-3.9	-5.4	5.2	5.7
Sinker	90.5	90.5	2139	2139	10:30	132	0%	-26.3	7.7	-7.4	-6.5	5.2	5.7
Curveball	76.8	76.8	2400	2400	3:45	290	0%	-51.0	-2.4	9.9	-5.1	5.0	4.9
Cutter	89.5	90.5	2026	2069	11:45	171	0%	-25.8	9.3	-1.3	-5.8	5.2	5.7
Changeup	83.4	84.1	1653	1805	10:30	136	0%	-33.3	7.4	-6.2	-5.4	5.1	5.3

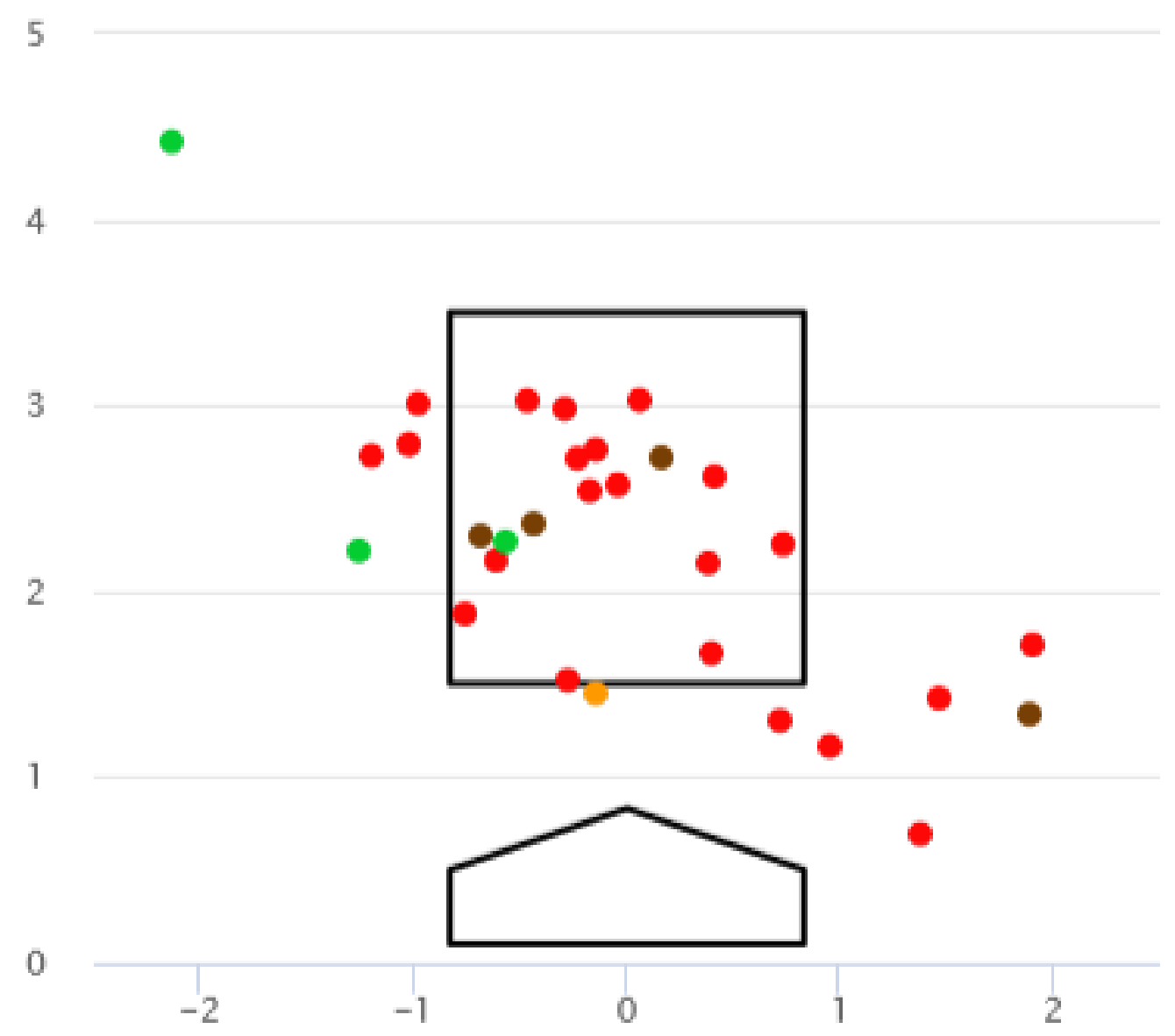
Velocity ▼

FB CH CT SI CB



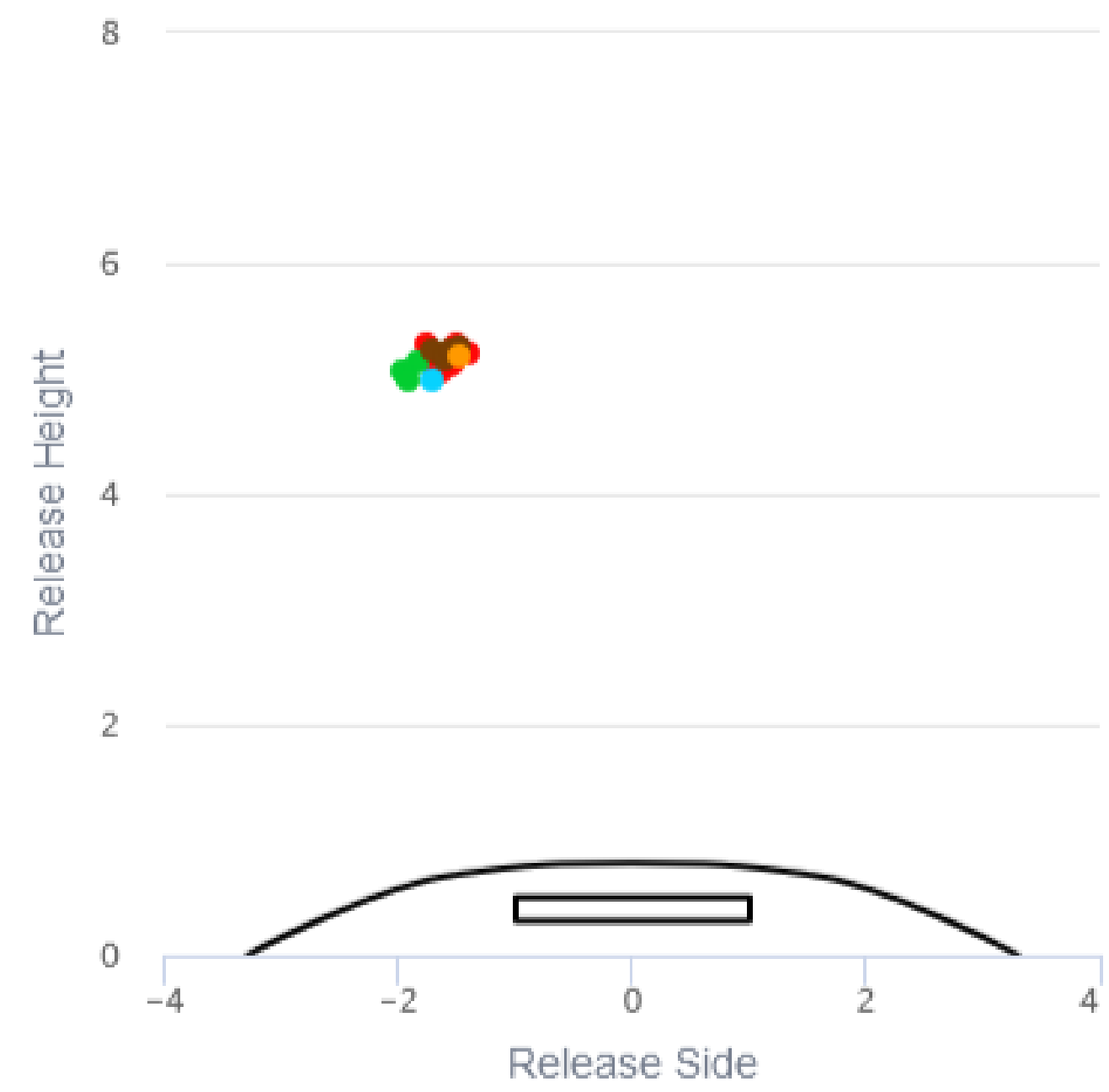
2D 3D

● FB ● CH ● CT ● SI ● CB



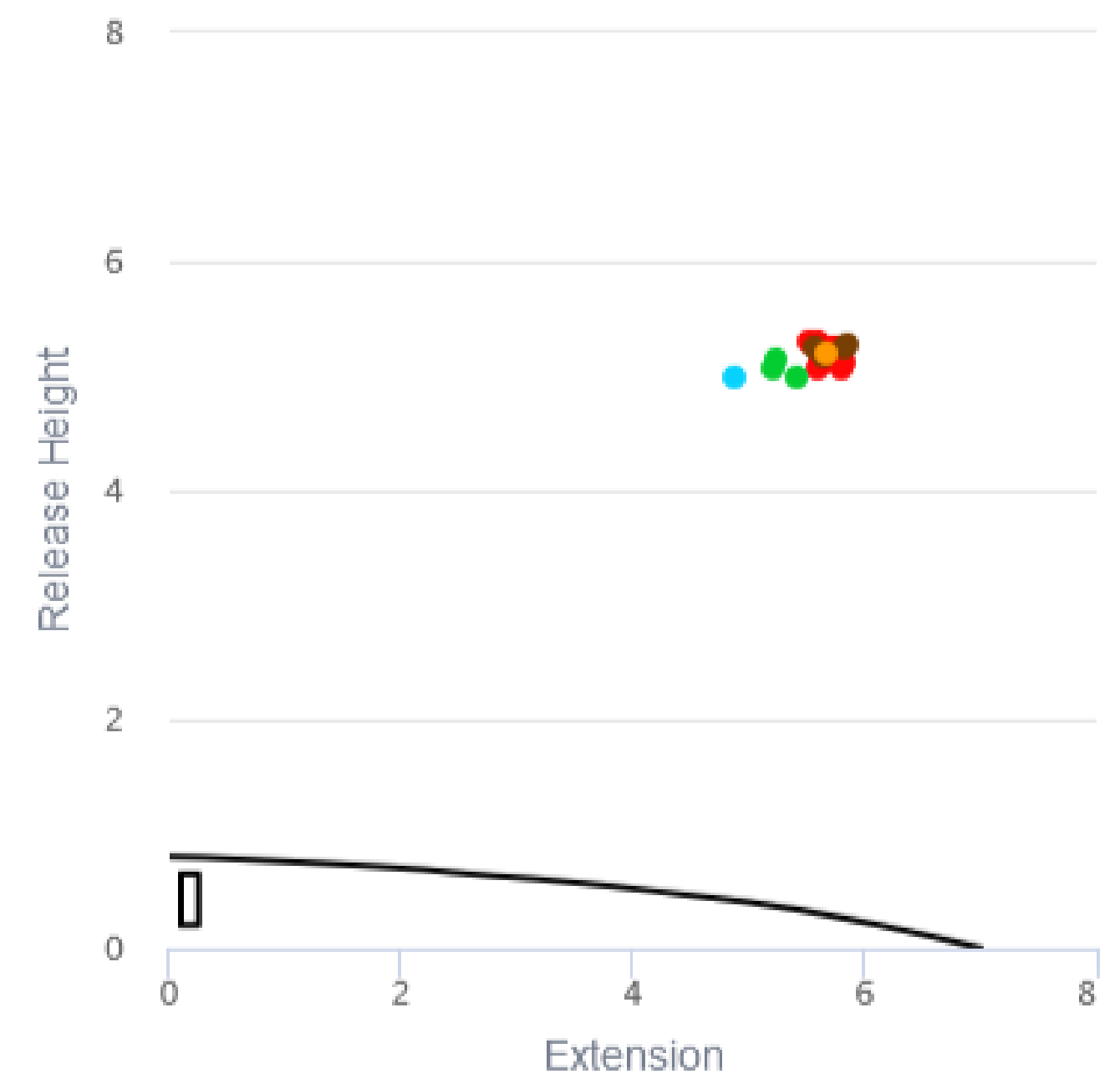
2D 3D

● FB ● CH ● CT ● SI ● CB



2D 3D

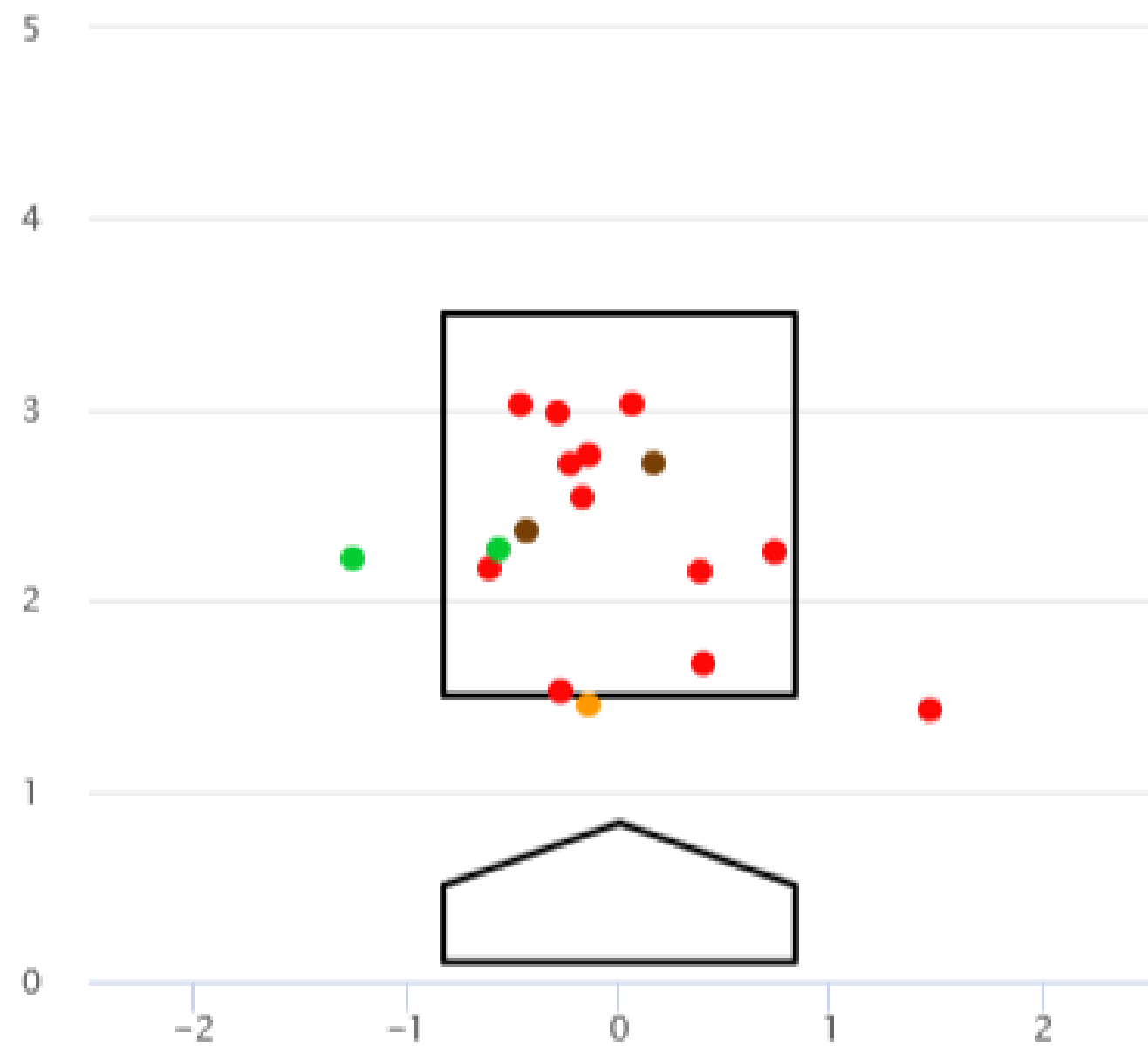
● FB ● CH ● CT ● SI ● CB



Swings

2D 3D

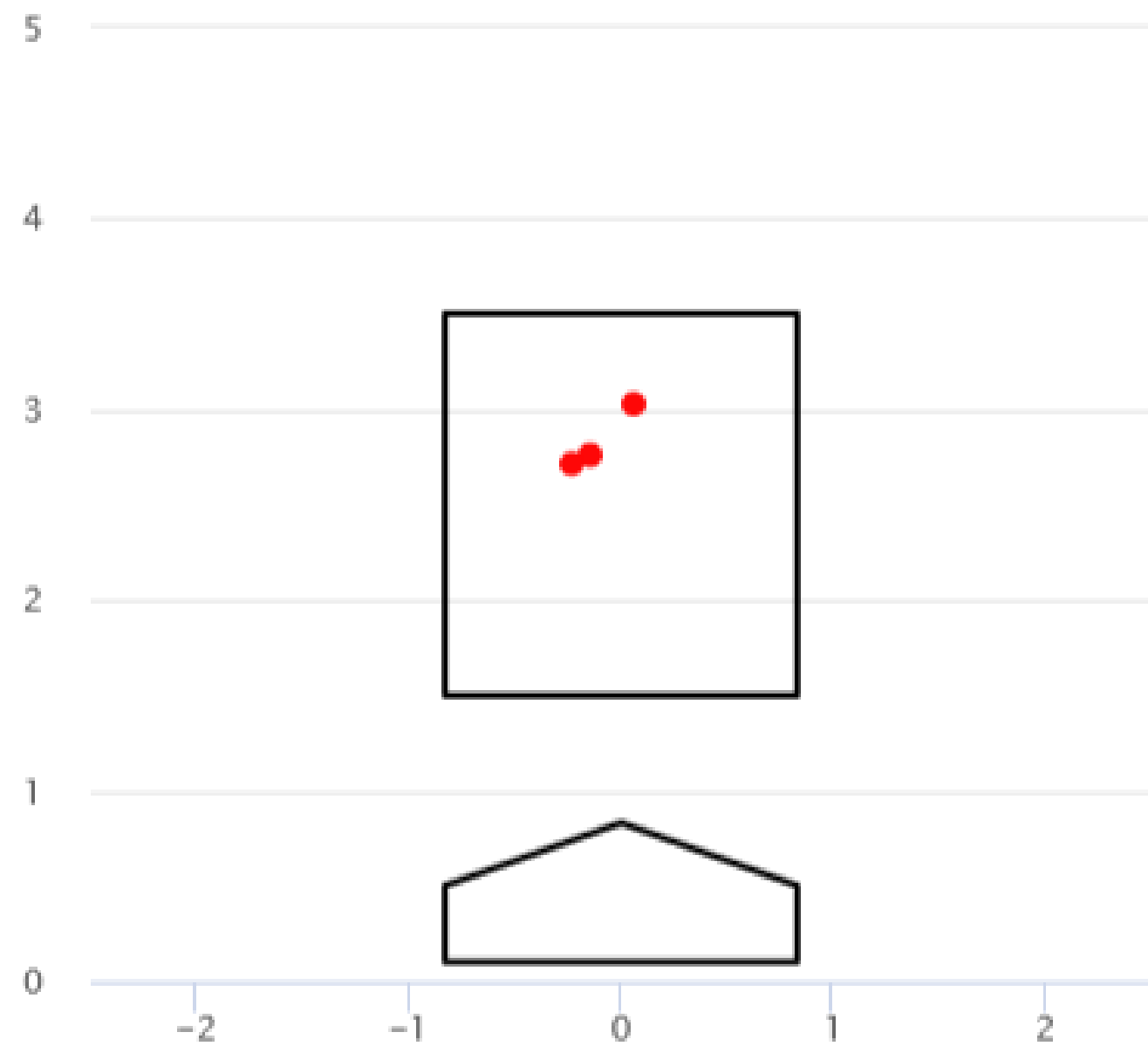
● FB ● CH ● CT ● SI



Whiffs

2D 3D

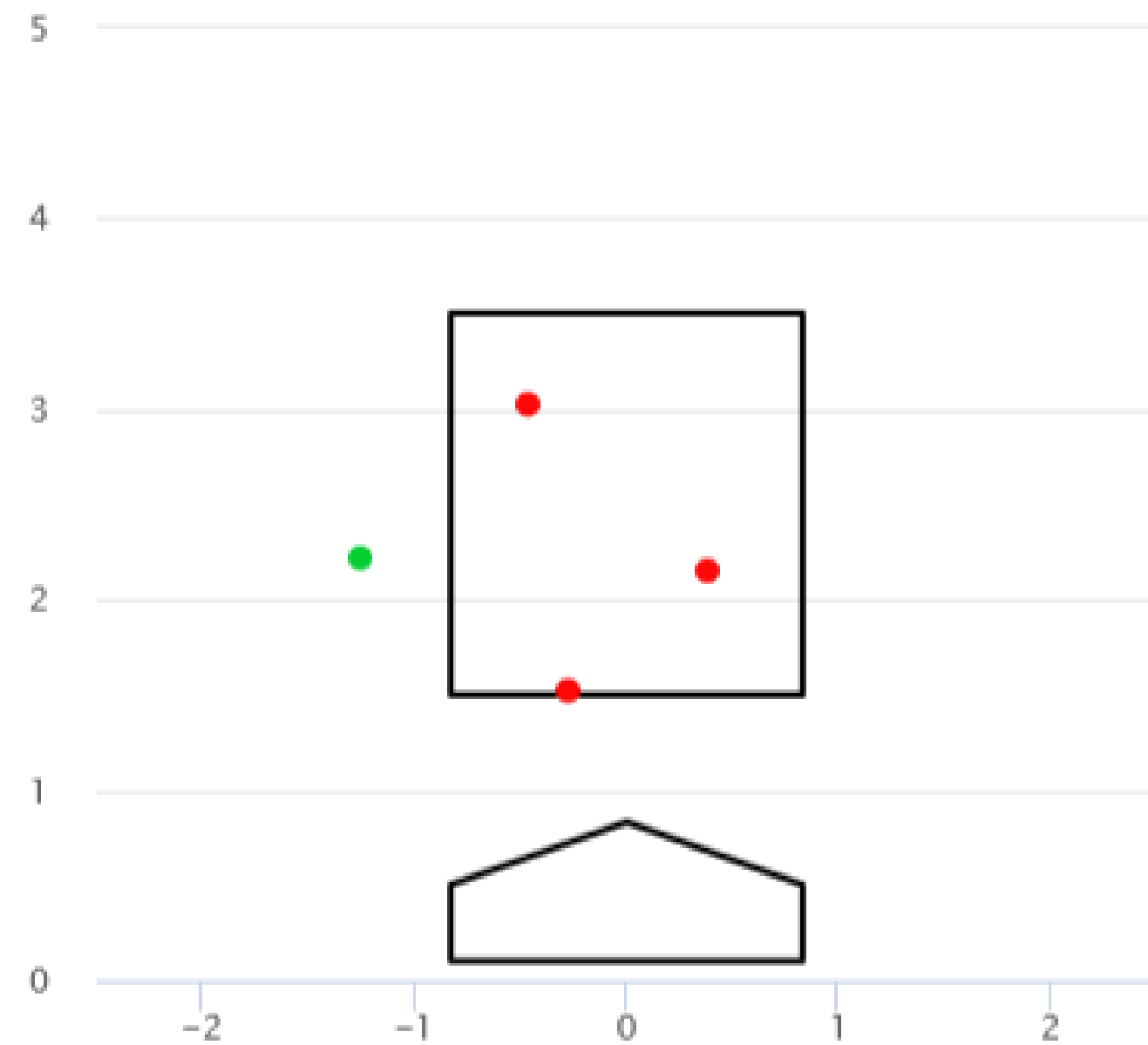
● FB



Balls In Play

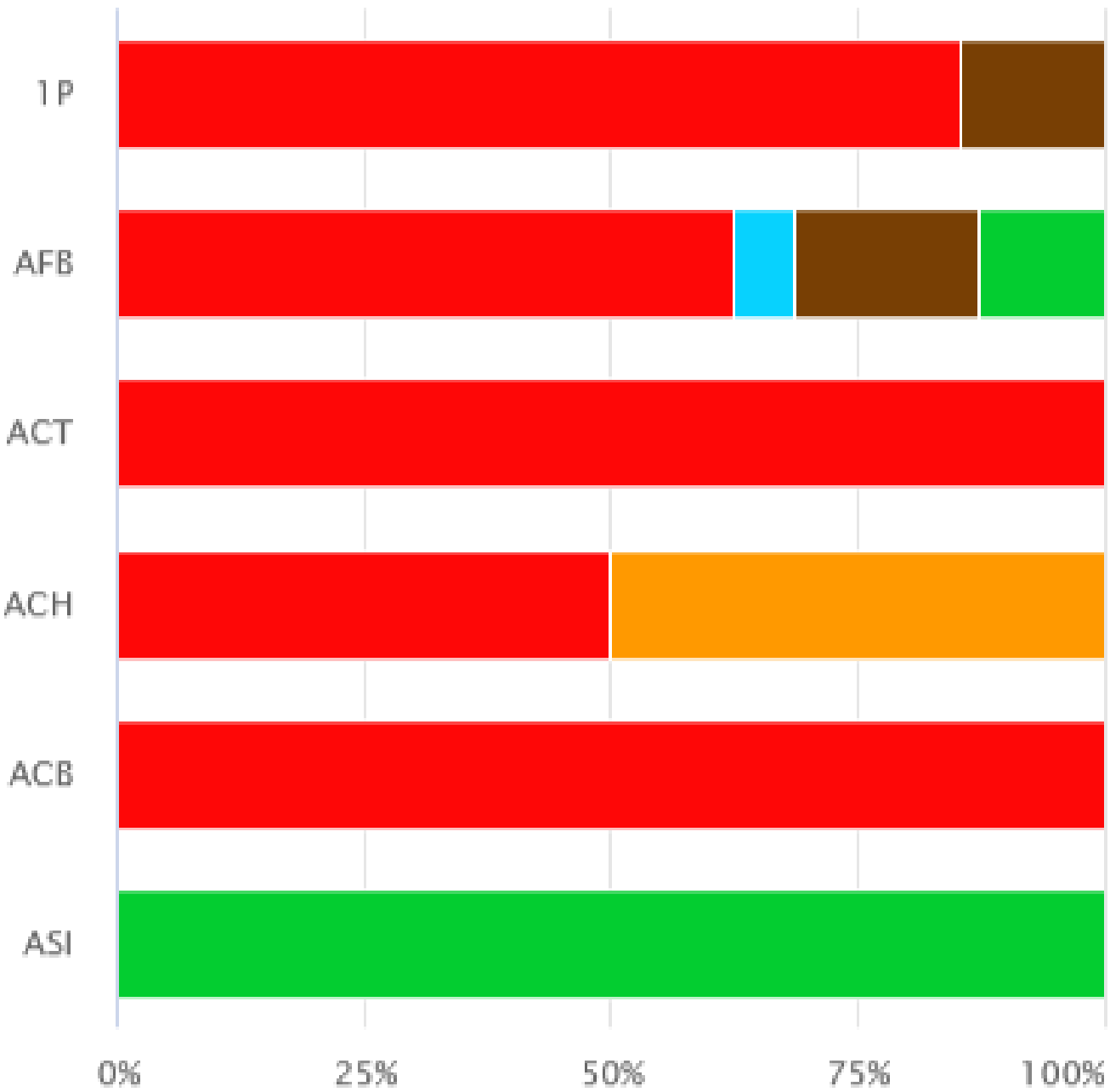
2D 3D

● CH ● FB



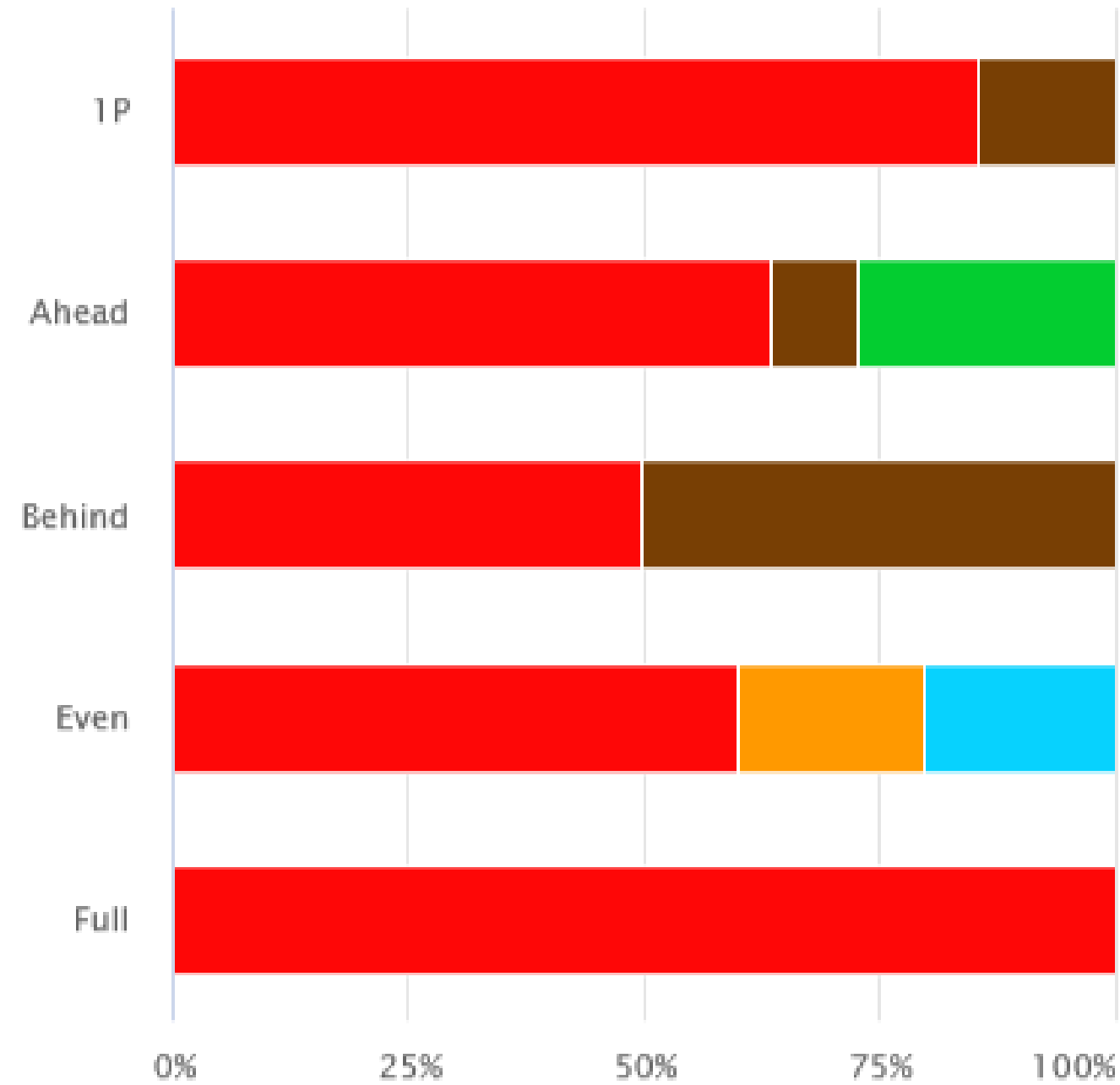
Pitch Sequencing

● FB ● SI ● CB ● CT ● CH



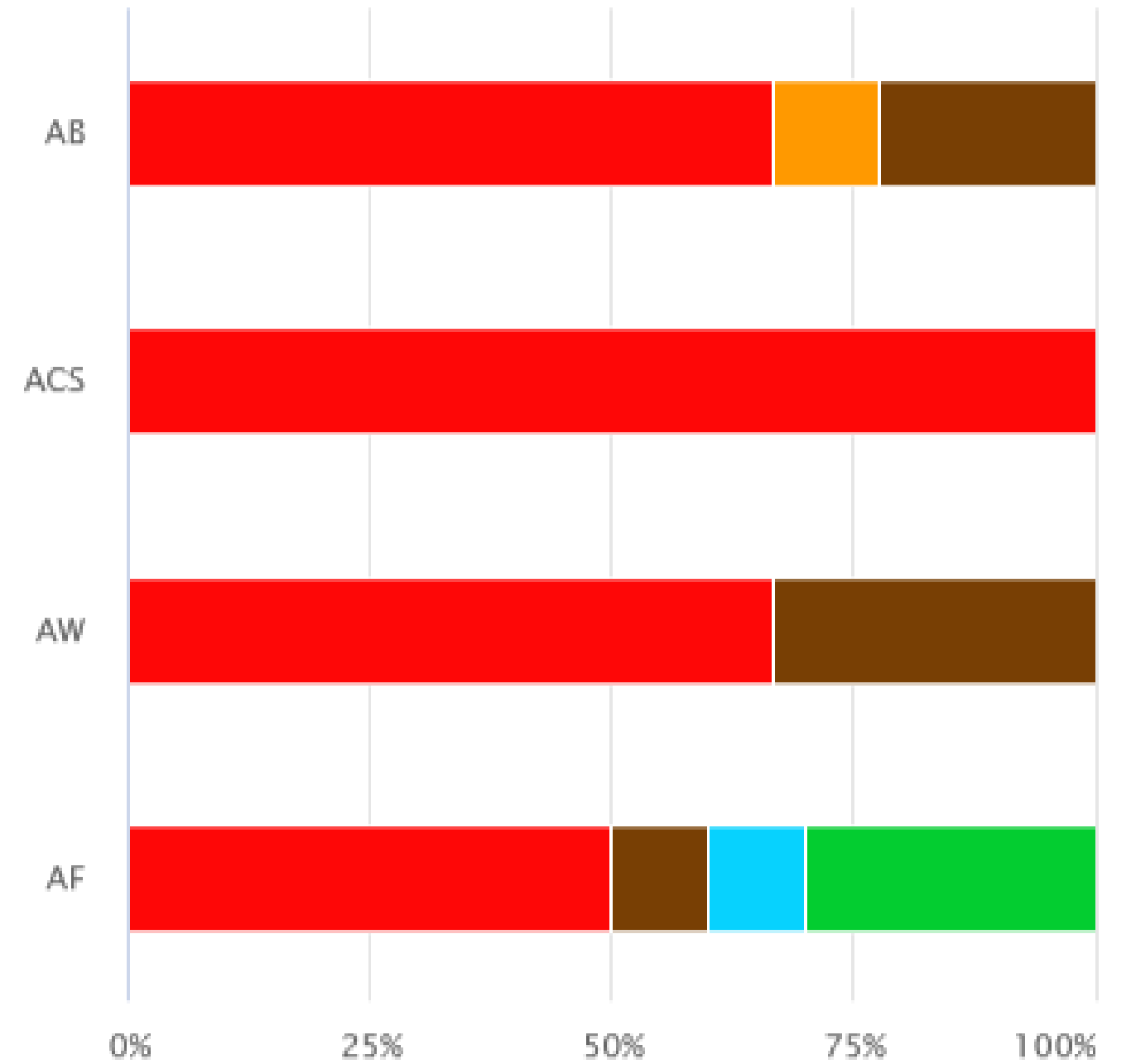
Count Sequencing

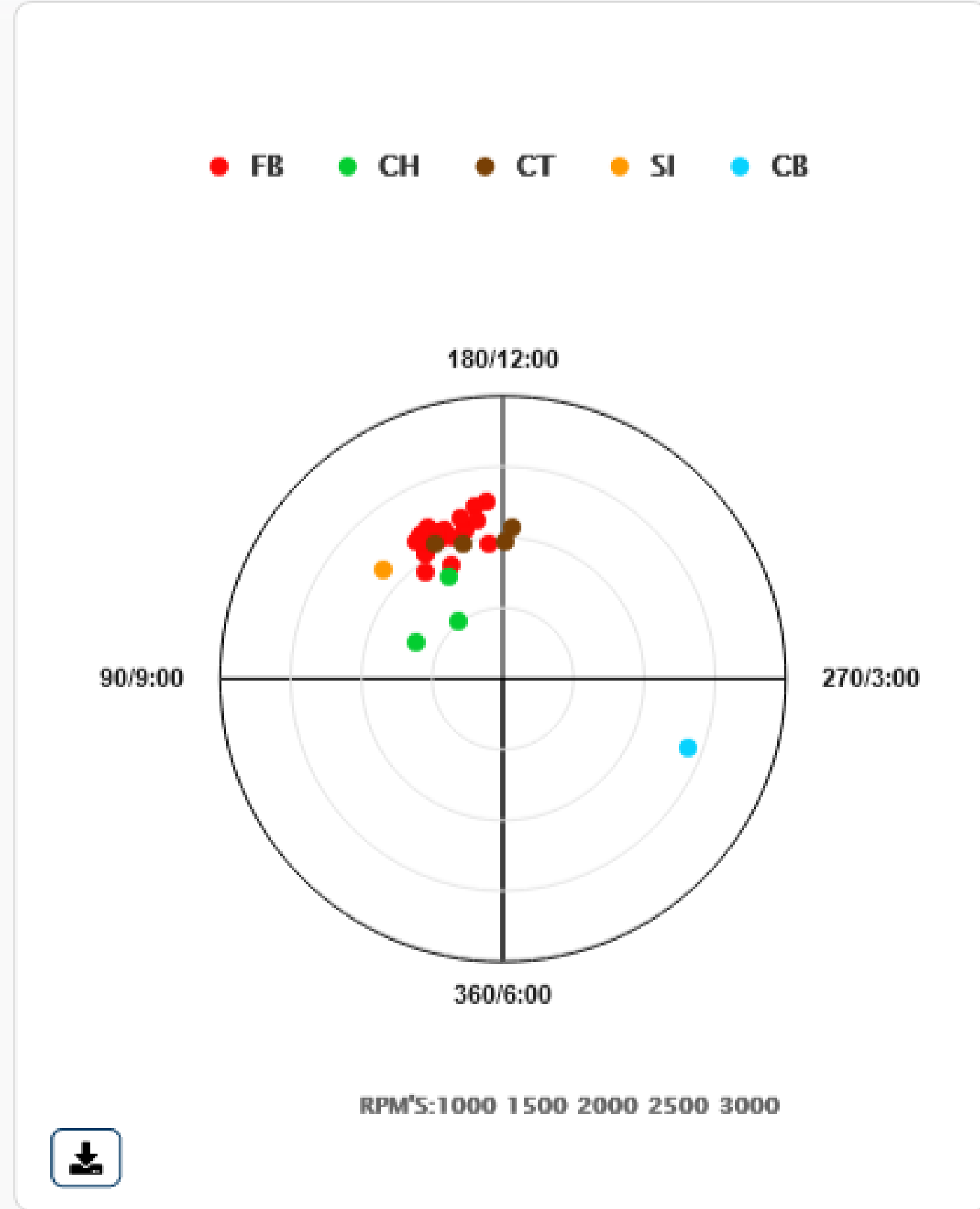
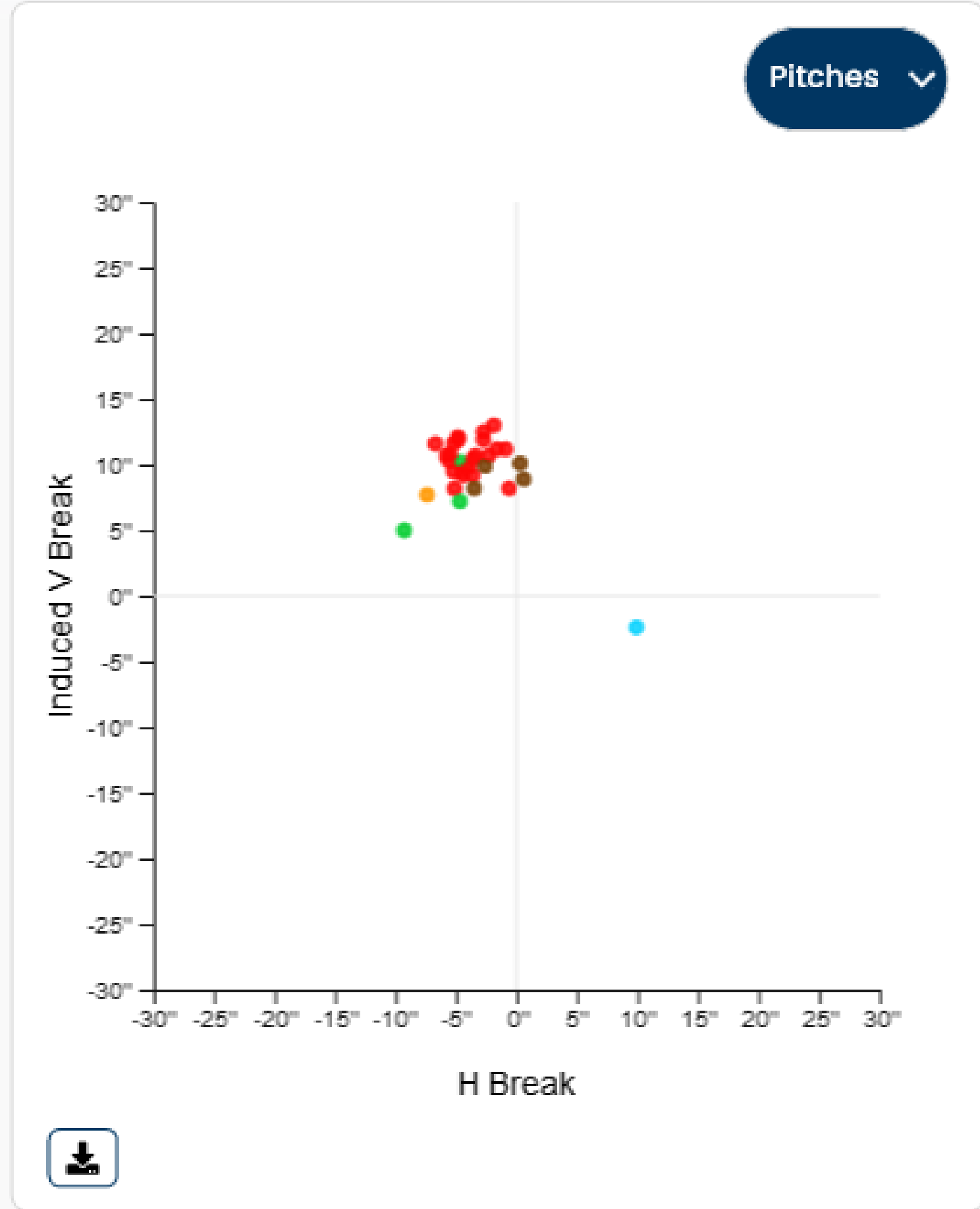
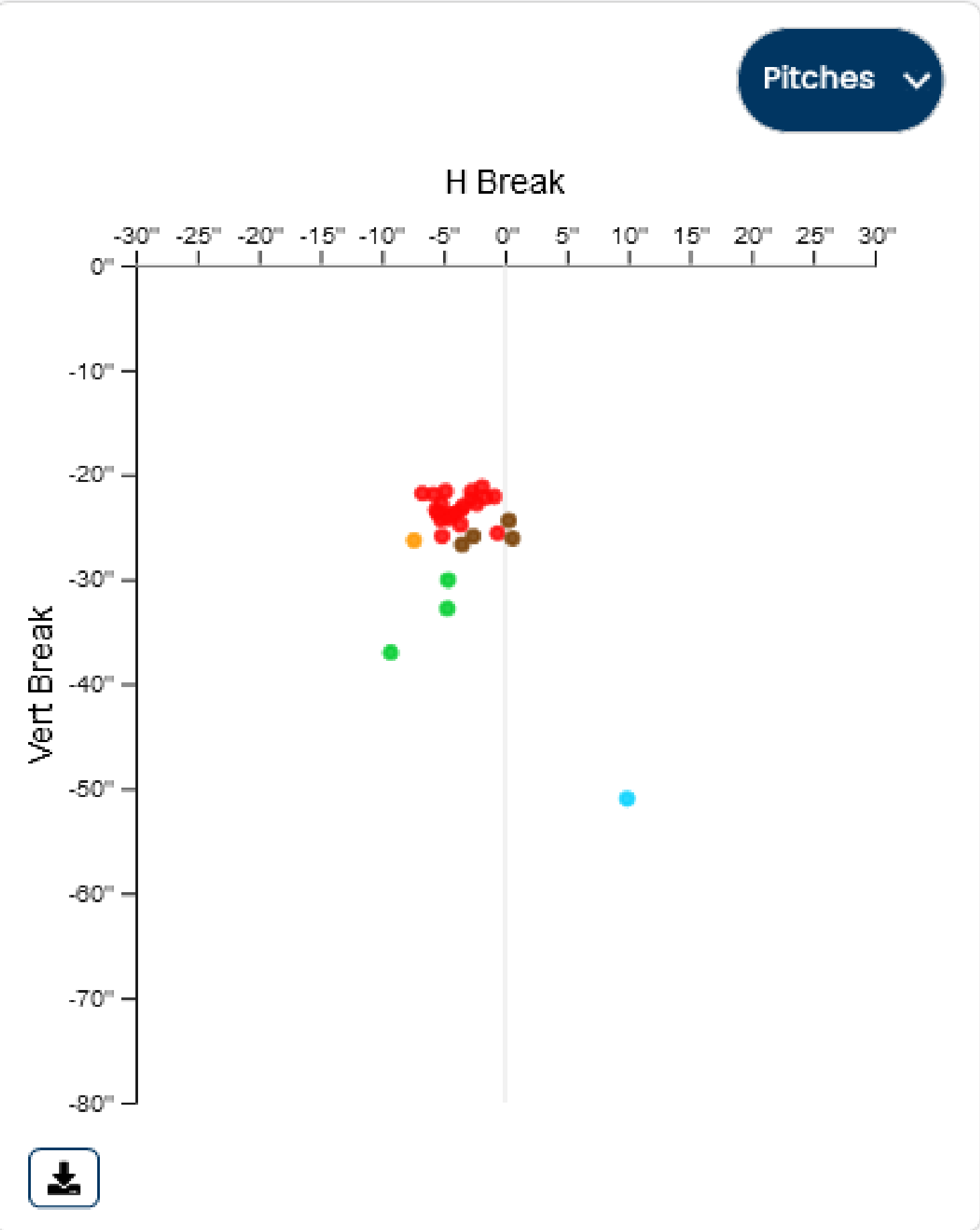
● FB ● CT ● CH ● SI ● CB



Result Sequencing

● FB ● SI ● CT ● CB ● CH





Batted Balls

Pitch No	Batter	Pitch Type	Result	EV	LA	Distance
193	Bohning, Brandon	Changeup	Single	72.9	22.3	213
195	Brown, Bryce	Fastball	Out	87.8	76.1	-
229	Halsema, Trevor	Fastball	Out	92.9	17.4	293
252	Herron, Mark	Fastball	Single	81.7	4.0	69
Average				83.8	30.0	192