

Schneider, Austin

Results

| K | BB | HBP | H | 2B | 3B | HR | 1st Pitch K % |
|---|----|-----|---|----|----|----|---------------|
| 5 | 4 | — | 7 | — | — | — | 50% |

Summary Table

| Pitch Type | Count | % | Edge % | Takes | Called Strikes | Swings | Whiffs | CSW % | Fouls | BIP |
|------------|-------|-------|--------|-------|----------------|--------|--------|-------|-------|-----|
| Fastball | 43 | 37.4% | 37.2% | 18 | 8 | 25 | 5 | 30.2% | 12 | 8 |
| Sinker | 21 | 18.3% | 28.6% | 14 | 6 | 7 | 1 | 33.3% | 4 | 2 |
| Curveball | 17 | 14.8% | 23.5% | 12 | 3 | 5 | — | 17.6% | 4 | 1 |
| Slider | 23 | 20% | 26.1% | 13 | 1 | 10 | — | 4.3% | 5 | 5 |
| Changeup | 11 | 9.6% | 36.4% | 6 | 1 | 5 | 3 | 36.4% | 1 | 1 |
| Total | 115 | 100% | 31.3% | 63 | 19 | 52 | 9 | 24.3% | 26 | 17 |

Plate Discipline

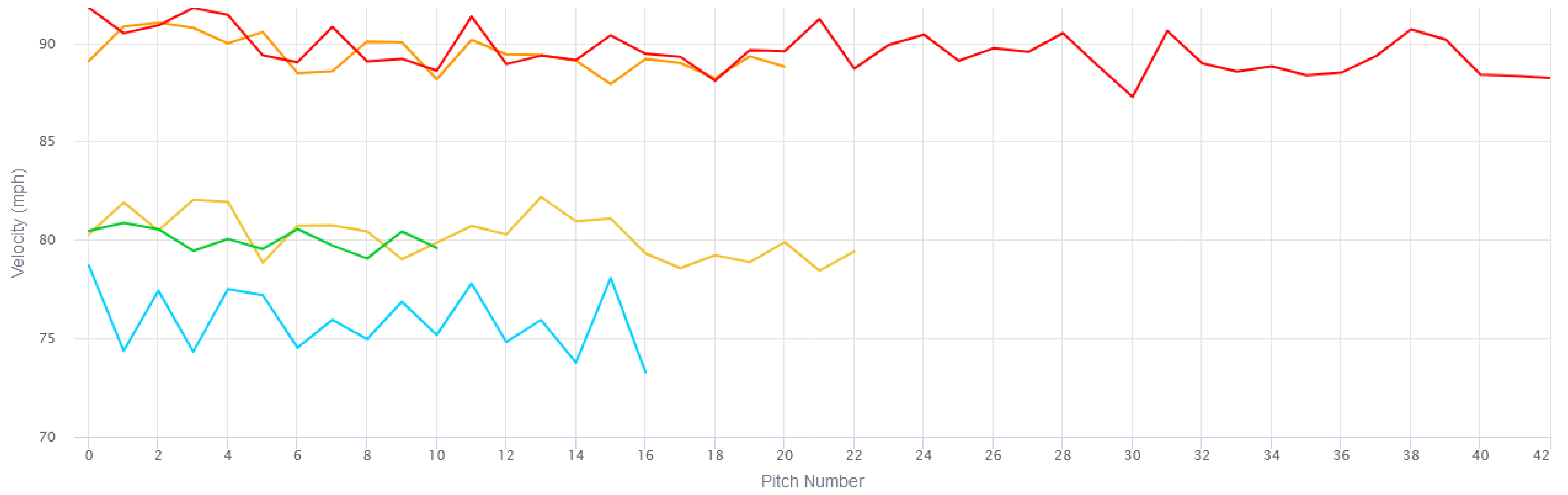
| Pitch type | # | Swing % | SwStr % | Whiff % | Zone Swing % | Zone Contact % | Chase % | Chase Contact % | Edge % | Strike % |
|------------|-----|---------|---------|---------|--------------|----------------|---------|-----------------|--------|----------|
| Fastball | 43 | 58.1% | 11.6% | 20% | 69.2% | 88.9% | 41.2% | 57.1% | 55.8% | 76.7% |
| Sinker | 21 | 33.3% | 4.8% | 14.3% | 50% | 100% | 18.2% | 50% | 33.3% | 61.9% |
| Curveball | 17 | 29.4% | 0% | 0% | 40% | 100% | 25% | 100% | 35.3% | 47.1% |
| Slider | 23 | 43.5% | 0% | 0% | 90% | 100% | 7.7% | 100% | 26.1% | 47.8% |
| Changeup | 11 | 45.5% | 27.3% | 60% | 75% | 33.3% | 28.6% | 50% | 36.4% | 54.5% |
| Total | 115 | 45.2% | 7.8% | 17.3% | 67.3% | 89.2% | 25% | 66.7% | 40.9% | 61.7% |

Pitch Characteristics

| Pitch type | Avg Velo | Peak Velo | Avg Spin | Peak Spin | Tilt | Axis | Efficiency | V Break | Ind V Break | H Break | V Approach | Avg Rel Height | Avg Extension |
|------------|----------|-----------|----------|-----------|------|------|------------|---------|-------------|---------|------------|----------------|---------------|
| Fastball | 89.6 | 91.8 | 2374 | 2542 | 1:19 | 220 | 0% | -19.9 | 14.0 | 10.9 | -5.4 | 5.9 | 6.5 |
| Sinker | 89.4 | 91.0 | 2370 | 2557 | 1:39 | 229 | 0% | -21.3 | 12.8 | 13.4 | -5.5 | 5.9 | 6.5 |
| Curveball | 75.9 | 78.7 | 2460 | 2675 | 7:14 | 37 | 0% | -58.2 | -10.5 | -8.0 | -9.6 | 5.8 | 6.3 |
| Slider | 80.2 | 82.2 | 2563 | 2781 | 9:14 | 97 | 0% | -41.5 | 1.8 | -7.0 | -7.9 | 5.7 | 6.0 |
| Changeup | 80.0 | 80.9 | 2154 | 2331 | 2:33 | 257 | 0% | -37.8 | 4.4 | 13.7 | -7.8 | 5.8 | 6.5 |

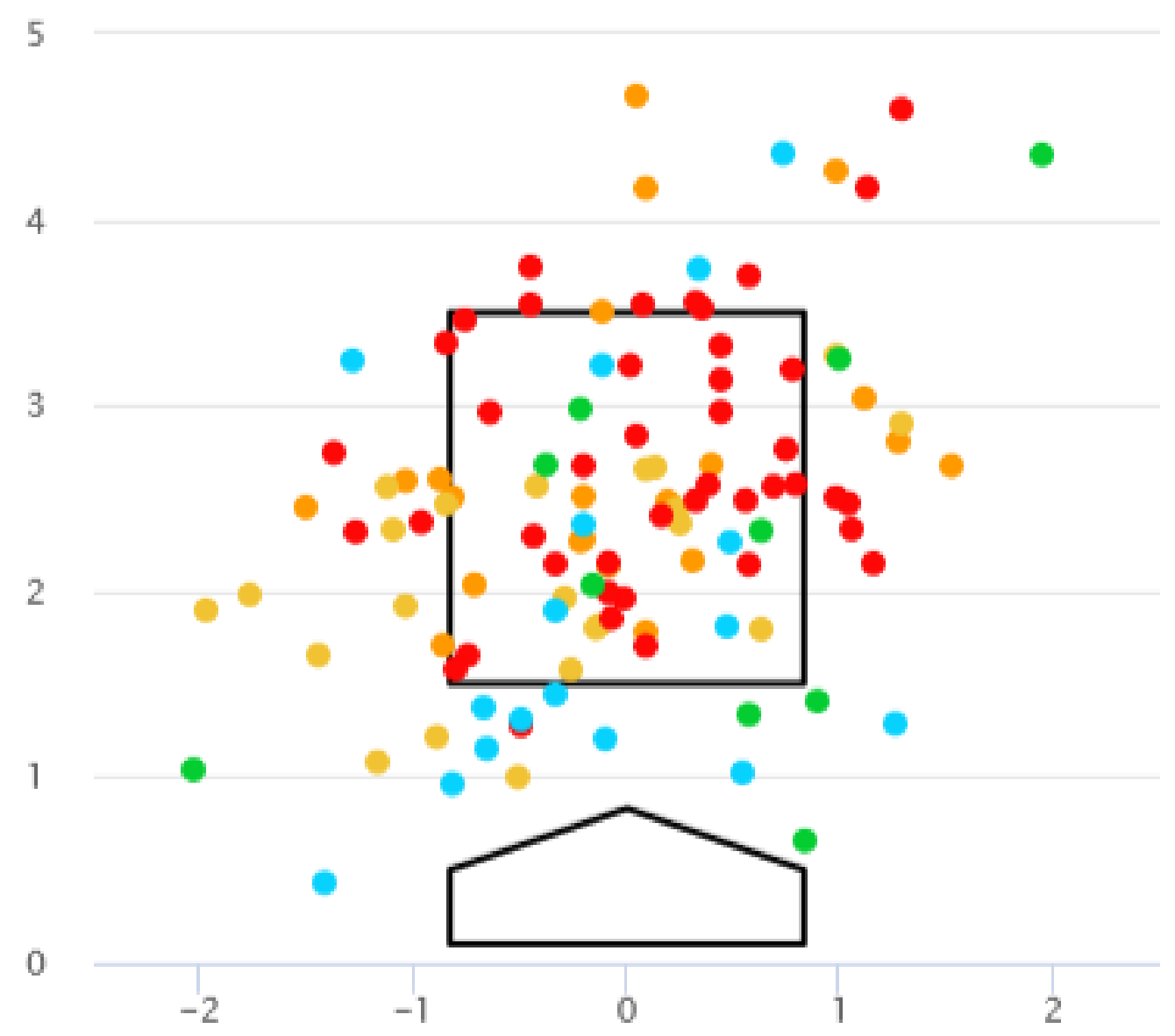
Velocity ▼

SI SL FB CH CB



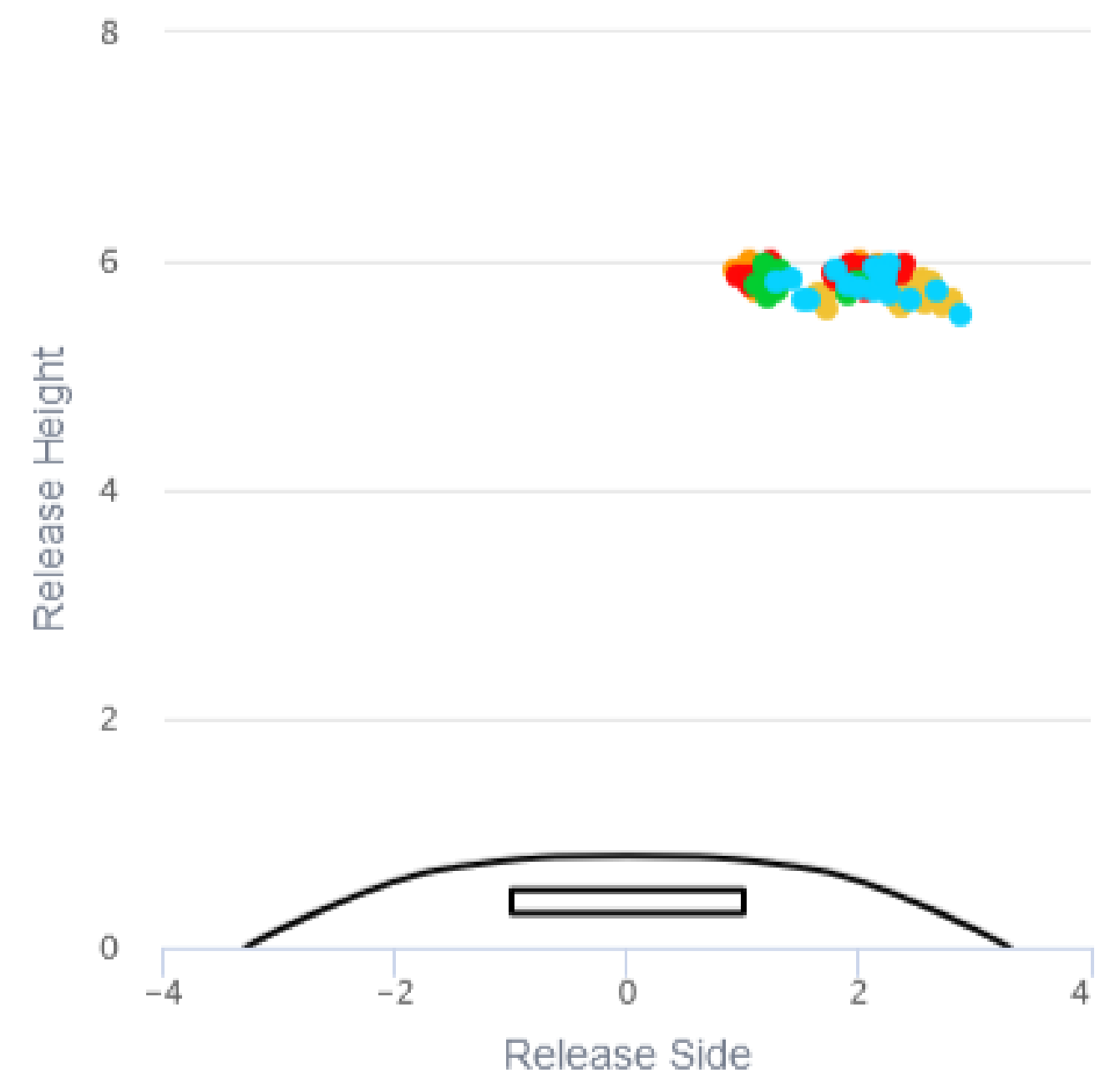
2D 3D

SI SL FB CH CB



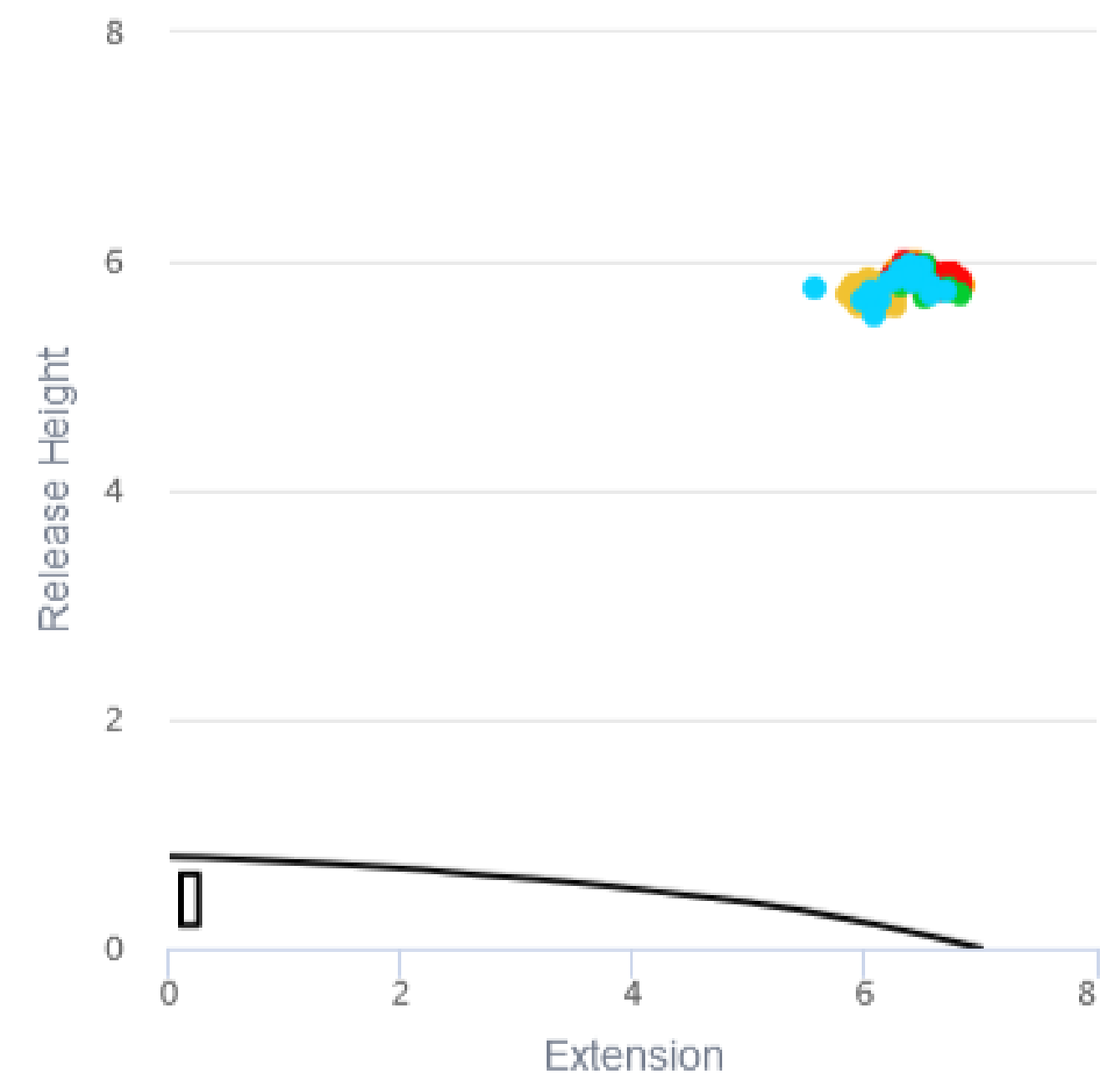
2D 3D

SI SL FB CH CB



2D 3D

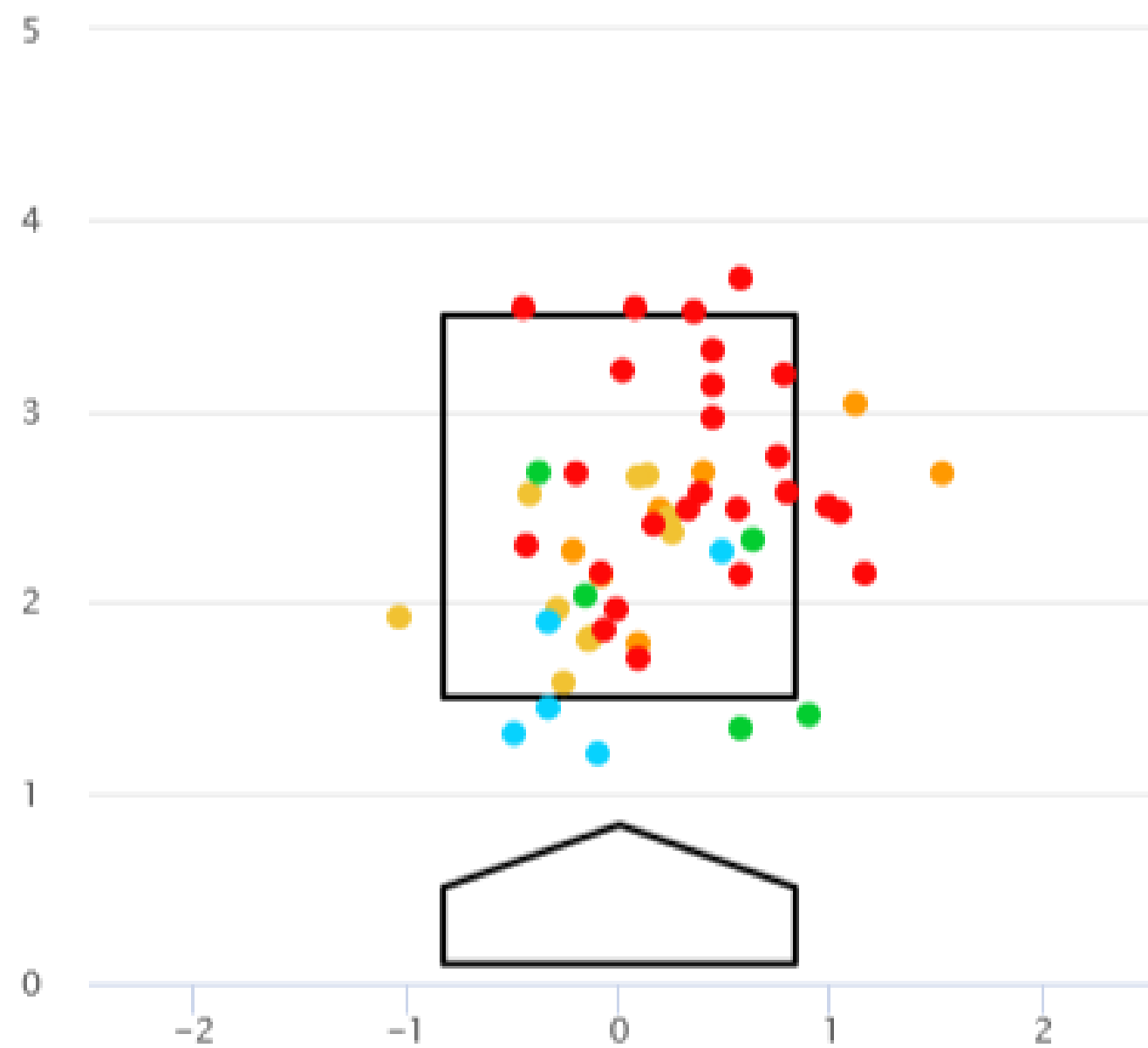
SI SL FB CH CB



Swings

2D 3D

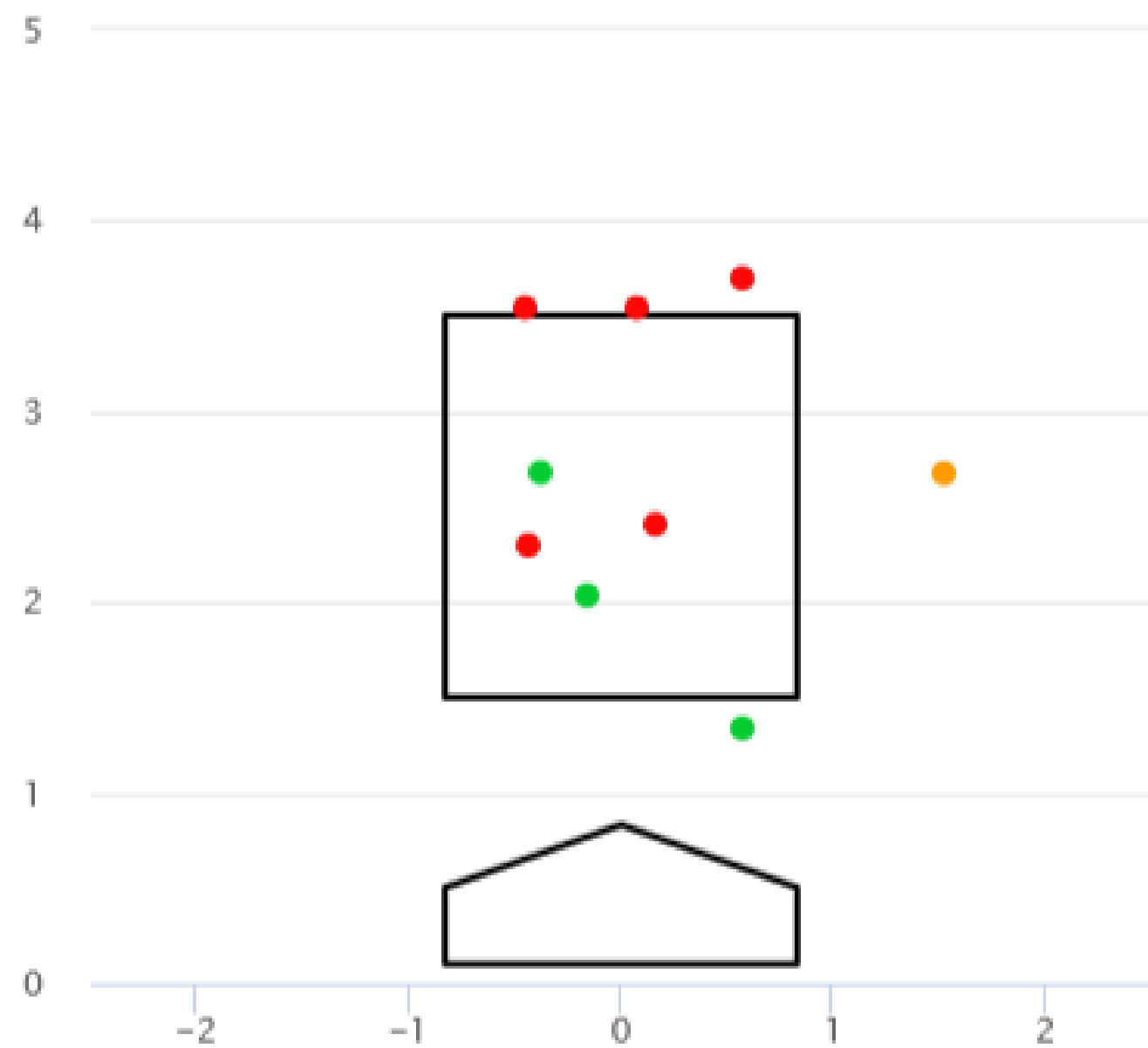
● SI ● SL ● FB ● CH ● CB



Whiffs

2D 3D

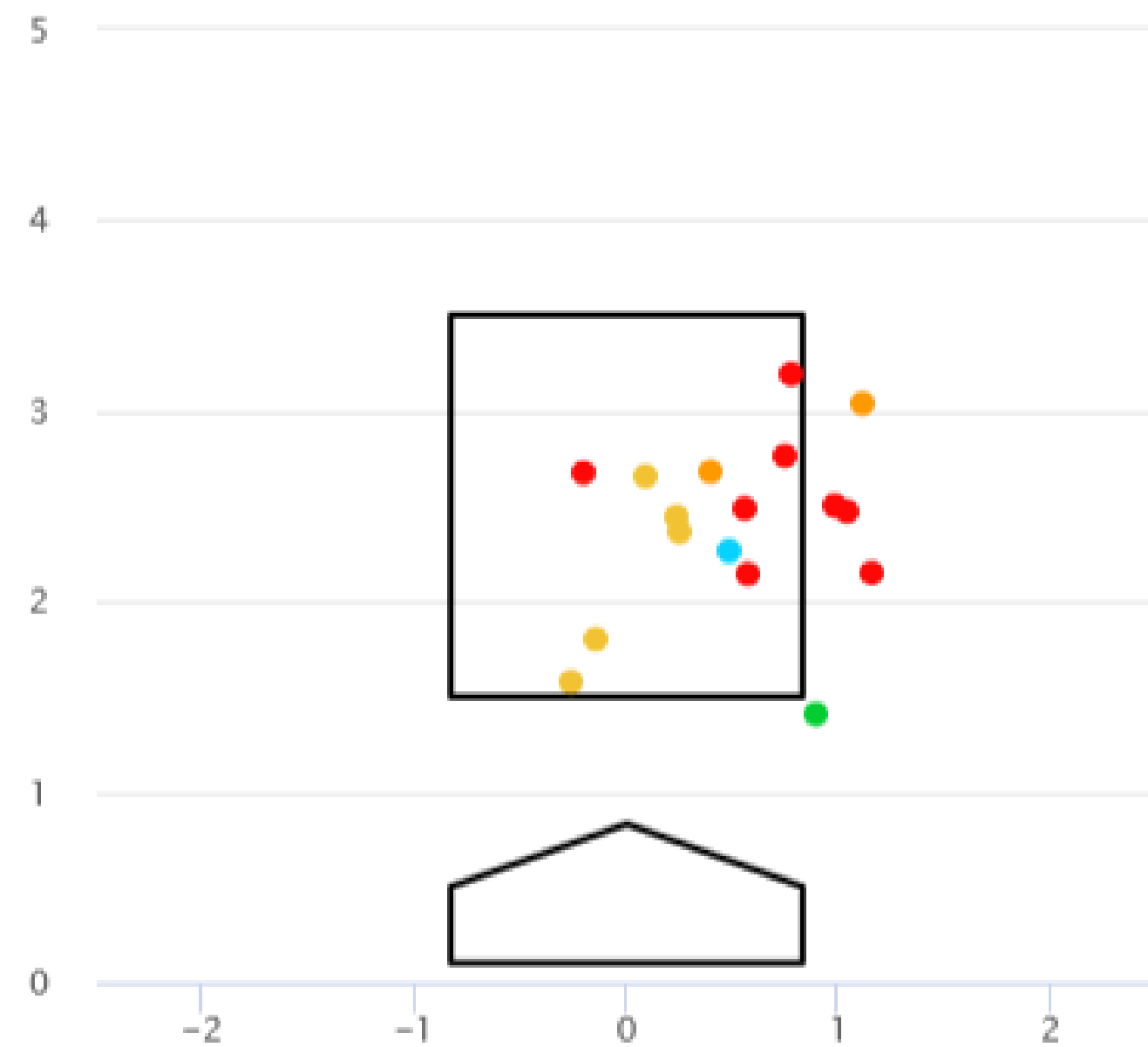
● FB ● CH ● SI



Balls In Play

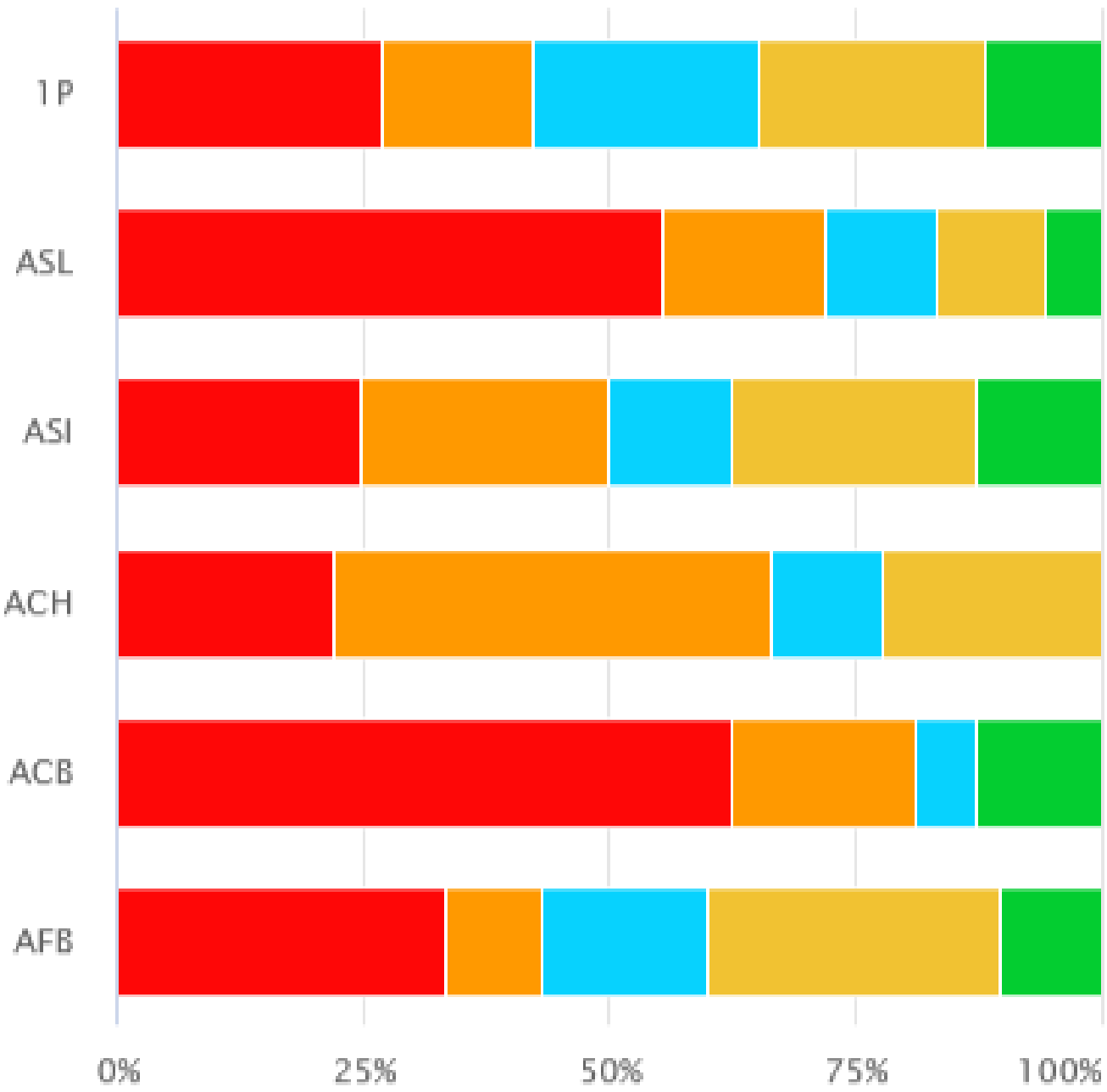
2D 3D

● FB ● SL ● CH ● SI ● CB



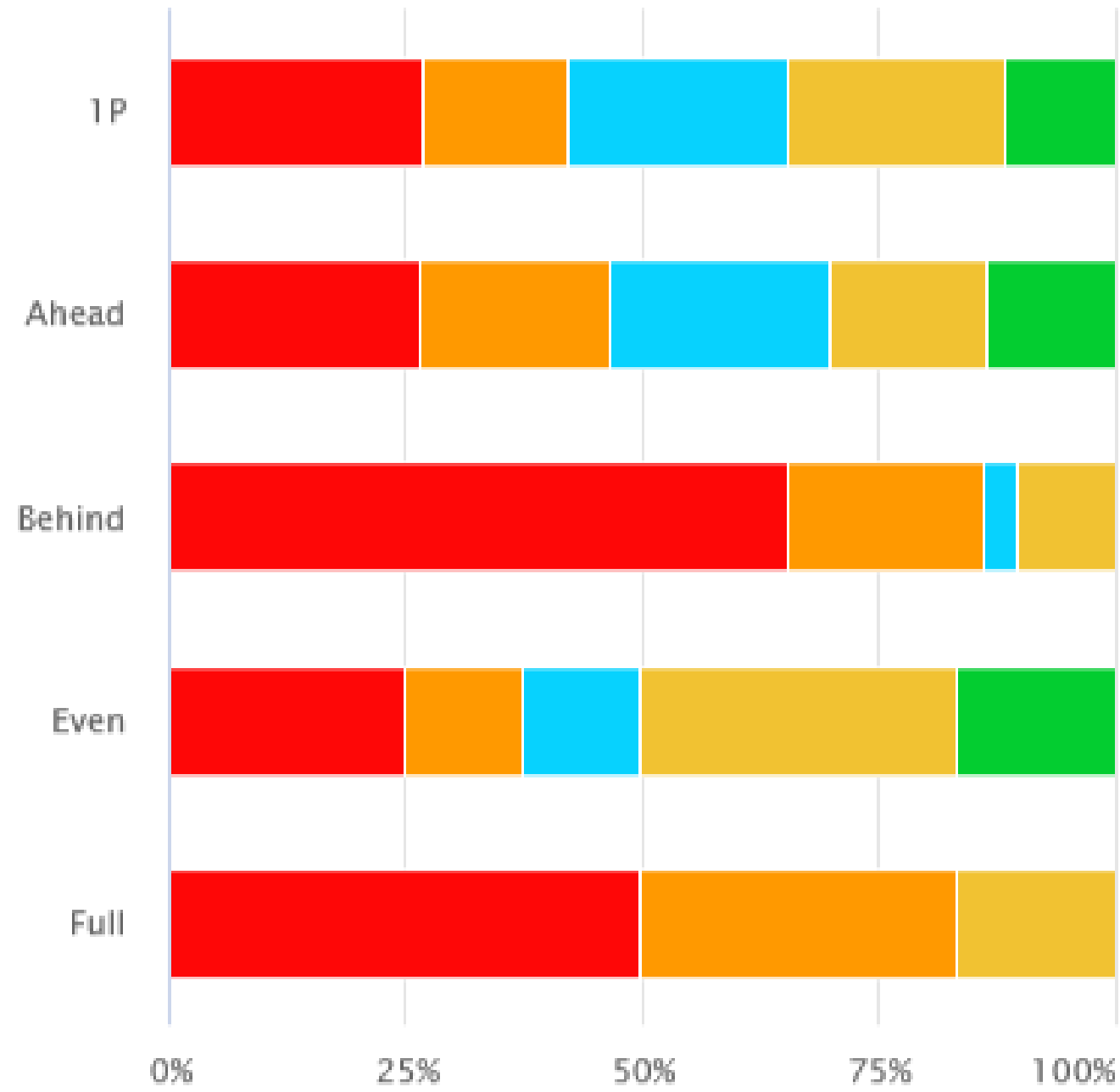
Pitch Sequencing

● FB ● SI ● CB ● SL ● CH



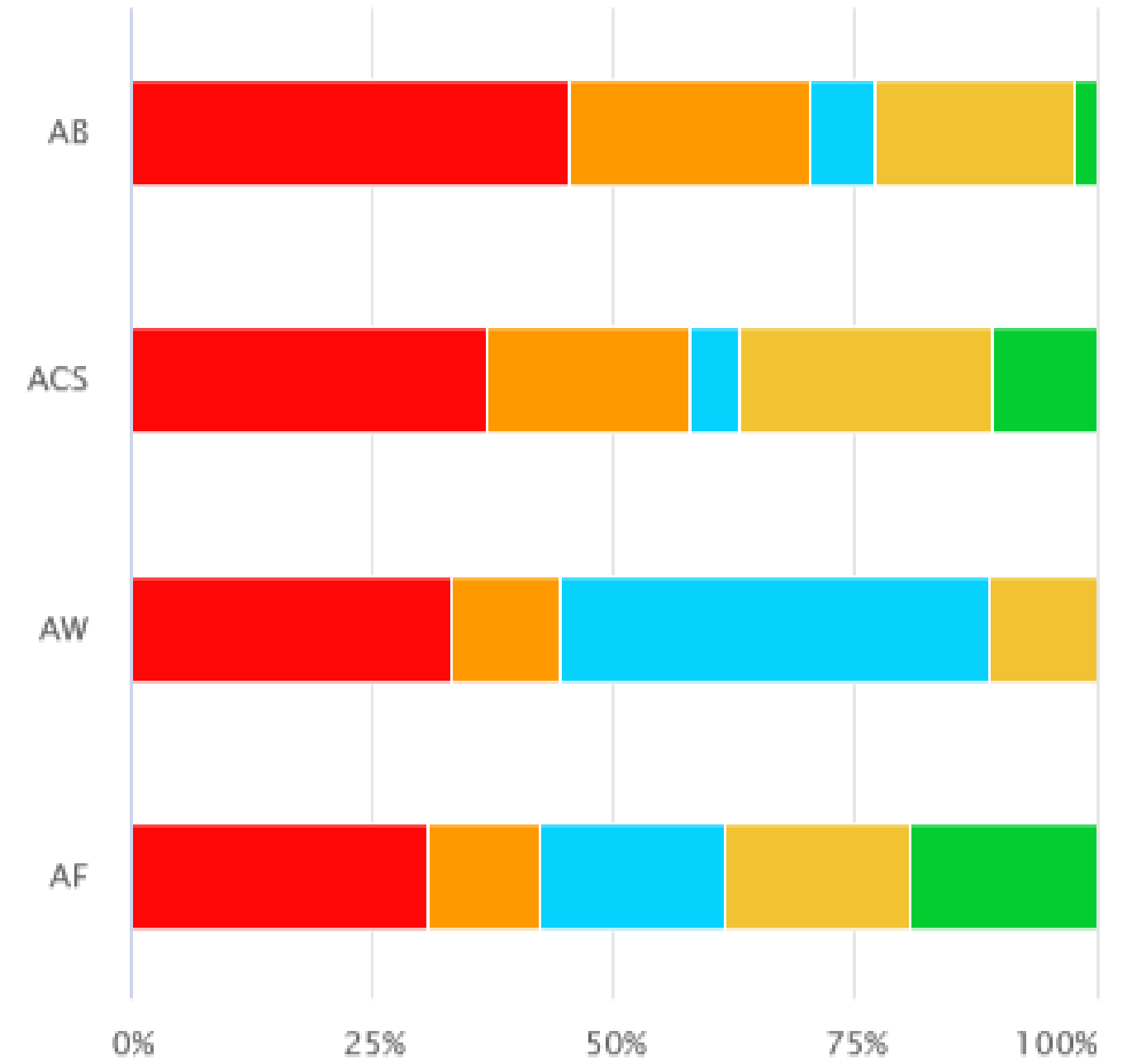
Count Sequencing

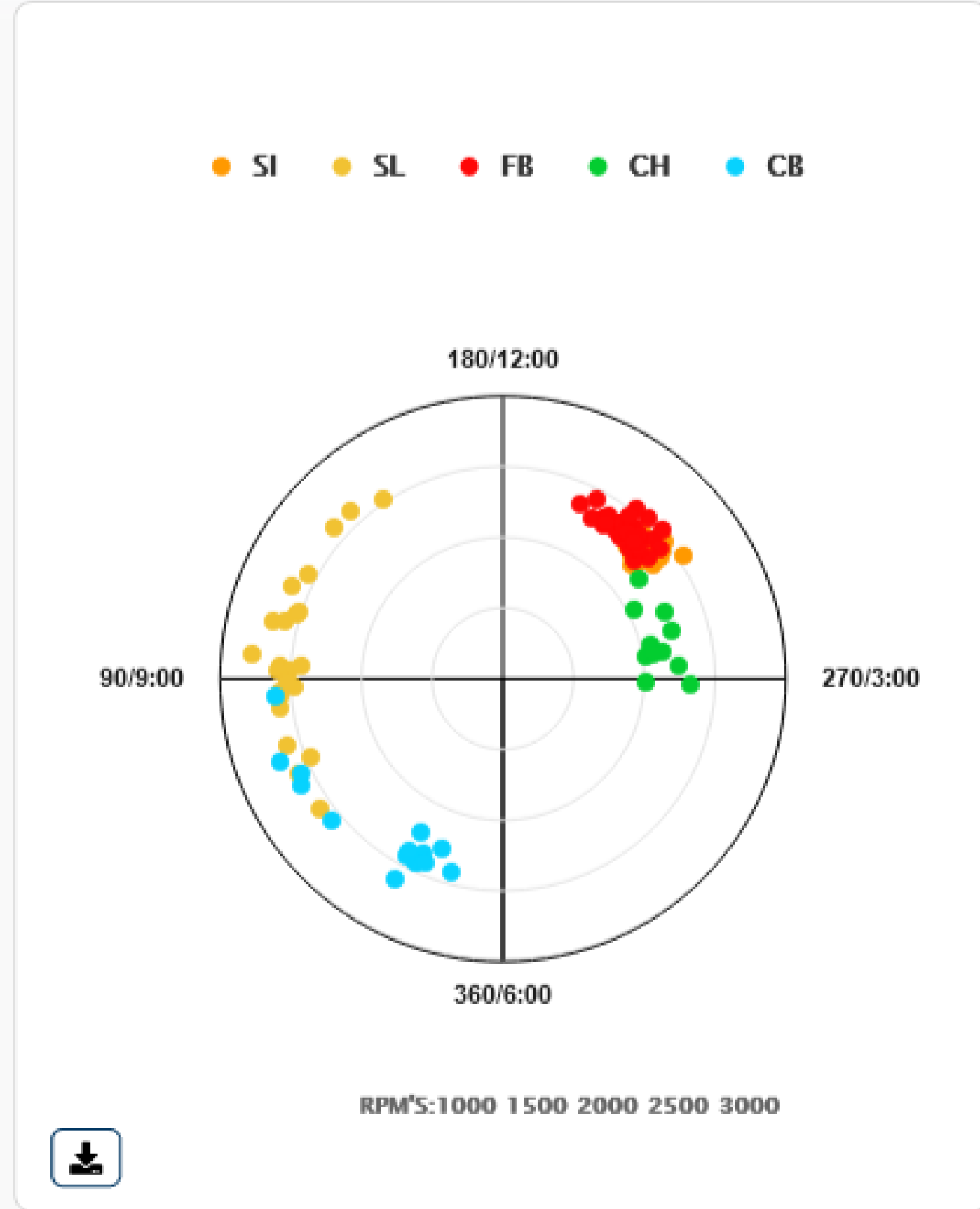
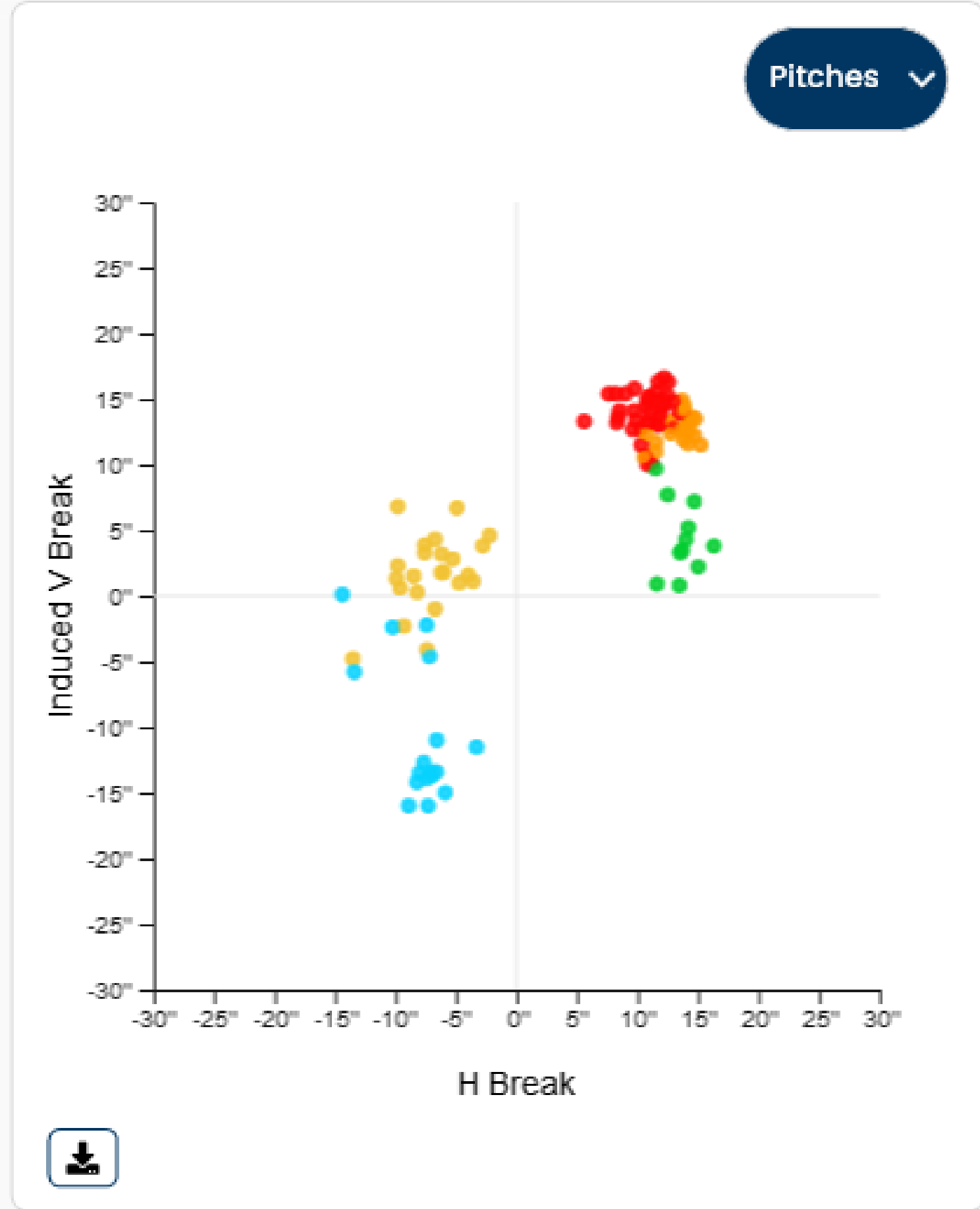
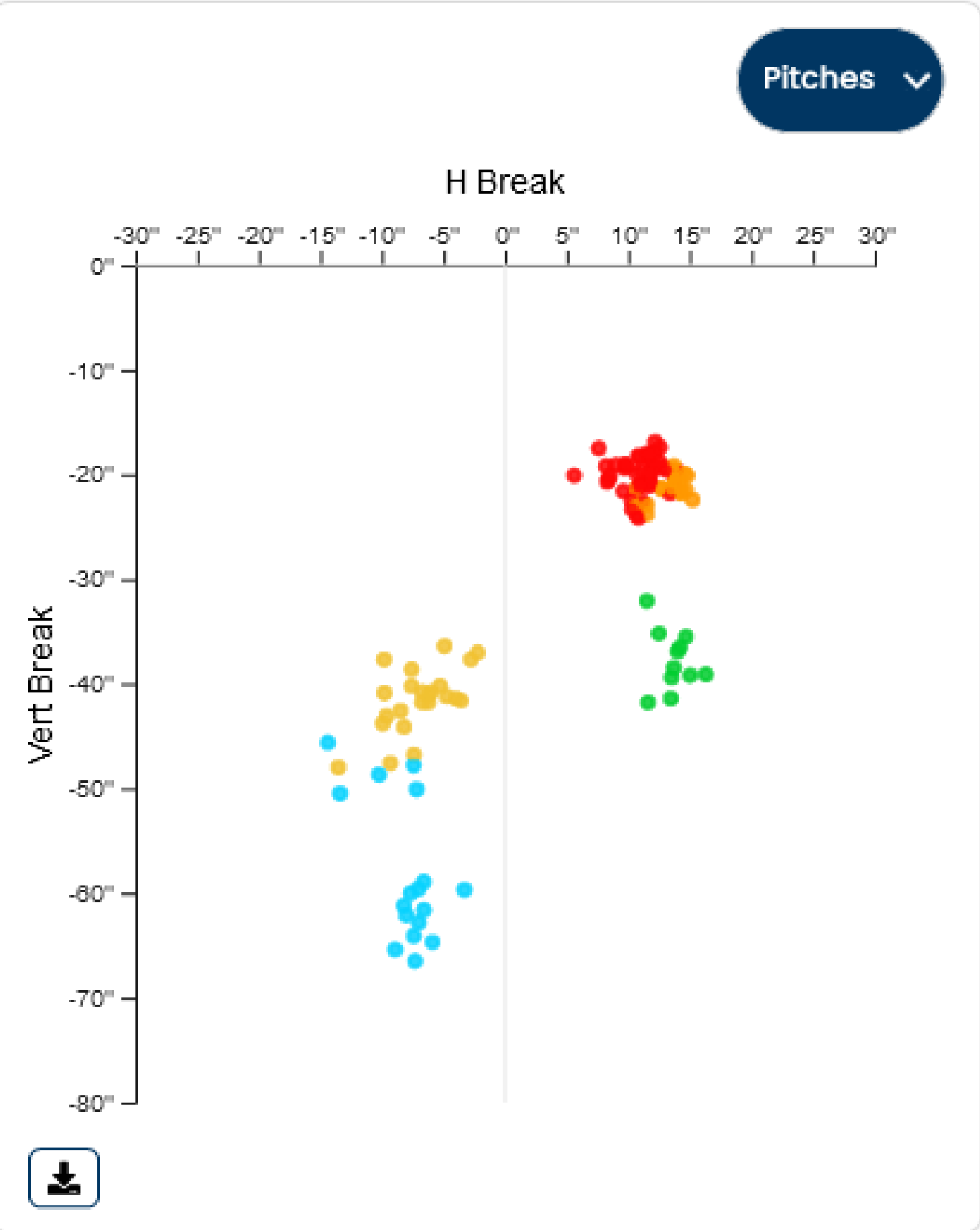
● FB ● SI ● CB ● SL ● CH



Result Sequencing

● FB ● SI ● CB ● SL ● CH





Batted Balls

| Pitch No | Batter | Pitch Type | Result | EV | LA | Distance |
|----------|-----------------|------------|--------|-------|-------|----------|
| 19 | Dunn, Cordell | Fastball | Single | 96.7 | 1.1 | 63 |
| 27 | Halsema, Trevor | Slider | Out | 81.7 | 4.7 | 84 |
| 46 | Hudson, Hunter | Fastball | Single | 81.8 | -2.0 | 36 |
| 52 | Herron, Mark | Changeup | Out | 44.5 | -22.6 | 8 |
| 55 | Cullen, Stephen | Slider | Out | 59.7 | -42.0 | 5 |
| 65 | Brown, Bryce | Fastball | Out | 70.0 | -9.1 | 14 |
| 128 | Acosta, Eduardo | Slider | Single | 80.0 | 16.7 | 218 |
| 133 | Dunn, Cordell | Fastball | Error | 58.9 | -15.6 | 11 |
| 144 | Halsema, Trevor | Fastball | Single | 86.3 | -8.8 | 21 |
| 147 | Hudson, Hunter | Sinker | Single | 78.8 | 19.3 | 227 |
| 150 | Herron, Mark | Slider | Out | 72.8 | 74.7 | - |
| 156 | Cullen, Stephen | Fastball | Single | 58.7 | -12.9 | - |
| 193 | Brown, Bryce | Curveball | Out | 75.3 | -22.3 | 8 |
| 198 | Acosta, Eduardo | Fastball | Out | 55.1 | 21.3 | 126 |
| 201 | Dunn, Cordell | Sinker | Out | 100.8 | 20.0 | 344 |
| 256 | Herron, Mark | Slider | Single | 85.3 | -17.7 | 11 |
| 258 | Cullen, Stephen | Fastball | Out | 41.7 | -18.5 | 9 |
| Average | | | | 72.2 | -0.8 | 79 |